

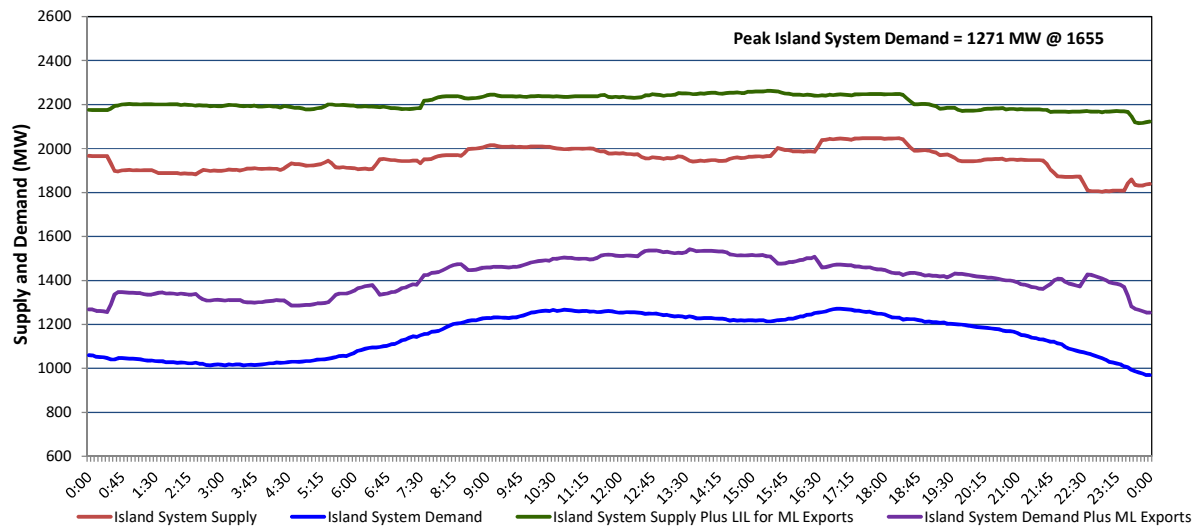
# Newfoundland Labrador Hydro (NLH)

## Supply and Demand Status Report Filed Monday, December 22, 2025

### Section 1

#### Island Interconnected System - Supply, Demand & Exports

#### Actual 24 Hour System Performance For Sunday, December 21, 2025



#### Island Supply Notes For December 21, 2025

- A** As of 0800 hours, March 30, 2025, Holyrood Unit 3 unavailable due to planned outage 130 MW (150 MW).
- B** As of 0823 hours, March 31, 2025, Bay d'Espoir Unit 1 unavailable due to planned outage (76.5 MW).
- C** As of 1400 hours, November 04, 2025, St. Anthony Diesel Plant available at 7.7 MW due to forced derating (9.7 MW).
- D** As of 1642 hours, December 17, 2025, Holyrood Unit 1 available at 160 MW due to forced derating (170 MW).

### Section 2

#### Island Interconnected System - Supply, Demand & Outlook

Mon, Dec 22, 2025		Island System Outlook <sup>2</sup>	Seven-Day Forecast	Island System Daily Peak Demand (MW)	
				Forecast <sup>8</sup>	Adjusted <sup>6</sup>
Island System Supply: <sup>4</sup>	1,934	MW	Monday, December 22, 2025	1,350	1,254
NLH Island Generation: <sup>3,7</sup>	1,455	MW	Tuesday, December 23, 2025	1,455	1,358
NLH Island Power Purchases: <sup>5</sup>	115	MW	Wednesday, December 24, 2025	1,455	1,358
NP and CBPP Owned Generation:	185	MW	Thursday, December 25, 2025	1,375	1,279
LIL/ML Net Imports to Island: <sup>9</sup>	179	MW	Friday, December 26, 2025	1,395	1,299
			Saturday, December 27, 2025	1,360	1,264
7-Day Island Peak Demand Forecast:	1,455	MW	Sunday, December 28, 2025	1,385	1,289

#### Island Supply Notes For December 22, 2025

- Notes:**
- Generation outages for running and corrective maintenance are included. These are not unusual for power system operations. They generally do not impact customer supply. Hydro schedules outages to system equipment whenever possible to coincide with periods when customer demands are low and sufficient supply reserves are available. However, from time to time equipment outages are necessary and reserves may be impacted.
  - As of 0800 Hours.
  - Gross continuous unit output.
  - Gross output from all Island sources (including Note 3).
  - NLH Island Power Purchases include: ML Imports, Exploits Generation, Rattle Brook, Star Lake, Wind Generation and capacity assistance (when applicable).
  - Adjusted for interruptible load and the impact of voltage reduction when applicable.
  - Due to limitations inherent in the design of combustion turbines, the output of combustion turbines may be reduced in the event that ambient temperatures exceed the threshold required for full rated output. This threshold is dependent on the design of each turbine.
  - Does not include ML Exports.
  - LIL Import sunk in the Island System. Actual LIL flows will be restricted by various system conditions including, but not limited to, Island Load, ML Exports and Avalon Unit status.

### Section 3

#### Island Peak Demand and Exports Information

#### Previous Day Actual Peak and Current Day Forecast Peak

Sun, Dec 21, 2025	Island Peak Demand <sup>10</sup>	16:55	1,271 MW
	Exports at Peak		201 MW
	LIL Net Imports to Island		5,358 MWh
Mon, Dec 22, 2025	Forecast Island Peak Demand		1,350 MW

- Notes:**
- Island Demand is supplied by NLH generation and purchases, LIL Imports plus generation owned and operated by Newfoundland Power and Corner Brook Pulp & Paper (Deer Lake Power, DLP).